

## Key People

<b>Tim Smit</b>	Tim Smit had the idea to build the <b>Eden Project</b> .
<b>Nicholas Grimshaw</b>	Nicholas Grimshaw designed the <b>biomes</b> for the <b>Eden Project</b> .
<b>Jane Colden</b>	Jane Colden was a <b>botanist</b> . She is thought to be America's first woman <b>botanist</b> .
<b>Elizabeth Garrett Anderson</b>	Elizabeth was the first woman to qualify as a <b>doctor</b> . She qualified in 1865.
<b>Louis Pasteur</b>	Louis Pasteur discovered that <b>germs</b> are living things that can be spread by touch or through the air.
<b>Charles Macintosh</b>	Charles Macintosh invented the first <b>waterproof</b> fabric.
<b>Rachel Carson</b>	Rachel Carson was a scientist who studied ocean habitats. She discovered that pollution from farms was affecting the oceans and the animals in them.
<b>James Blyth</b>	James Blyth invented the wind <b>turbine</b> in 1887. He used it to power the lights in his holiday home.

Tim Smit



Nicholas Grimshaw



Jane Colden



Elizabeth Garrett Anderson



Louis Pasteur



Charles Macintosh



Rachel Carson



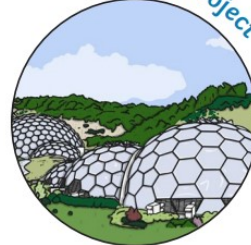
James Blyth



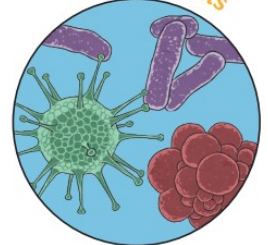
## Key Vocabulary

<b>biome</b>	A <b>biome</b> is an area with similar weather, rainfall, temperature, plants and animals.
<b>Eden Project</b>	The <b>Eden Project</b> has specially built ' <b>biome</b> ' structures. These house lots of different plants.
<b>botanist</b>	<b>Botanists</b> study plants.
<b>doctor</b>	<b>Doctors</b> treat people who are ill. They use science to work out what is wrong with someone and how to treat it.
<b>germs</b>	<b>Germs</b> are tiny living things that can cause diseases.
<b>turbine</b>	A <b>turbine</b> turns wind into electricity.
<b>waterproof</b>	If a fabric is <b>waterproof</b> , water can not soak through it.

Eden Project



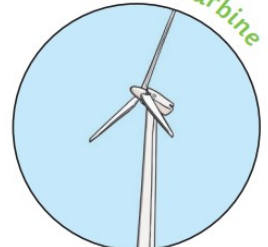
germs



botanist



wind turbine



doctor



waterproof coat

