

Key Vocabulary

Geography—Learning about the Earth and everything on it.

Human features—Things that are created, built or changed by humans

Physical features—Things that have been formed naturally on Earth.

Map—A picture of land or sea showing land features, cities, roads, etc.

Country—Land that is controlled by a single government (leaders and rule makers)

Country—A Land controlled by a government.

Continents—The world's 7 big parts of land made up of lots of countries.

Oceans—The 5 large bodies of water, covering 70% of Earth's surface

Arctic circle—Area at the top of the Earth – It is cold and icy here.

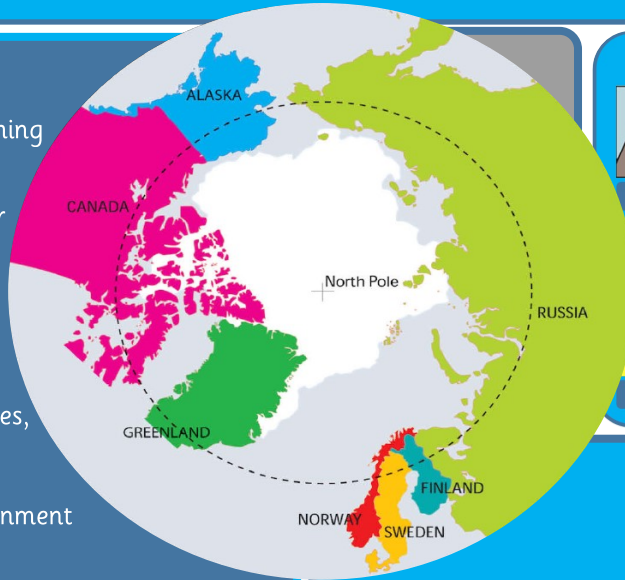
Climate—Type of weather that is expected in a particular place.

Biome—A large area on Earth with a particular type of climate and particular kinds of living things.

Tundra—The biome found in the arctic regions. It has some very cold, dry conditions.

Adapted—When living things have changed or adapted over many years to survive in a particular conditions.

Camouflage—When animals blend in to their surroundings so they are hard to be seen by predators or prey.



Physical Features



Human Features



Arctic Animals



London, UK



Sisimiut, Greenland



Key Questions

Is it possible to live in the Arctic?

What are continents and oceans?

What is the Arctic Circle?

Is the climate the in all Arctic Circle countries the same?

What do the countries look like in the Arctic Circle?

Do all arctic animals live across the whole Arctic Circle.

What do cities look like in the Arctic Circle?

Are there many differences or similarities between the Arctic Circle and the UK?

Summer



June

July

August

Sometimes sun doesn't set and it stays light all night.
Most of the snow and ice on lands melt.
The temperature is still quite cold.

Winter



November

December

January

February

Winter in the Arctic is very long and cold.
Most of the land is covered in ice during this time.
Sometimes the sun doesn't rise at all.